

Considerations for Development of Entrained Oil Thresholds for Oil Spill Risk Assessments

**Deborah French-McCay, PhD
RPS Ocean Science, Tetra Tech, Inc.
South Kingstown, Rhode Island, U.S.A.
Deborah.McCay@tetratech.com**

April 27, 2025

Summary

Oil spill modelling using full oil fate models such as RPS/TetraTech's SIMAP model provides output for two types of water column concentration data: (1) dissolved oil compounds and (2) total hydrocarbons and related compounds in petroleum oils (abbreviated as THC) in entrained oil droplets. The purpose of this technical note is to identify appropriate thresholds for use in oil spill risk assessments. The focus is on developing a THC threshold appropriate for modelled entrained oil droplets.

As described in detail herein, toxicity is related to the bioavailability of hydrocarbons and related compounds in petroleum oils (described as "hydrocarbons" herein for brevity). Soluble and semi-soluble components of oil dissolve and therefore become bioavailable (i.e., able to be taken up by aquatic organisms). In relatively fresh oil, some of the hydrocarbons in entrained oil droplets are soluble/semi-soluble compounds that may later dissolve and become bioavailable. However, as oil weathers, these potentially toxic components diminish to the point where the THC in entrained droplets is effectively non-toxic. Therefore, the focus of a risk assessment is typically on the dissolved hydrocarbon exposure.

Measurement of the concentration of oil in water, whether in the field or in laboratory studies, is complicated and not all constituents can be identified and measured individually. Mass recoveries (using the presently recommended methods) for gasoline, kerosene, and gas oil are typically >95%, whereas the mass recoveries for heavier substances in crude oils and heavier refined products are often <30%. As only some of the compounds in oil are measurable individually, and because of the desire to be inclusive of effects from hydrocarbons in oil droplets as well as the dissolved phase, aquatic toxicologists have attempted to use THC as a metric for evaluating toxicity of oil exposures. However, given the variable composition of oil as it weathers, development of effects levels or thresholds based on total hydrocarbons (THC) is problematic. The review series (Loughery et al. 2023; Stubblefield et al. 2023; Alloy et al. 2023; Parkerton et al. 2023a,b; Dettman et al. 2023; Bejarano et al. 2023; Lee et al. 2023; French-McCay et al. 2023) discusses these complications and provides guidance for aquatic toxicity studies of petroleum oils and their application to risk assessments and modelling-based analyses.

For the compounds dissolved from oil to which aquatic biota are primarily exposed (i.e., polycyclic aromatic compounds), thresholds based on acute lethality (LC50s, i.e., lethal concentrations for 50% of test organisms) generally range from about 10 ppb ($\mu\text{g/L}$) for sensitive early life history stages of aquatic species to 300 ppb, or more for less sensitive species and older

life stages. For sub-lethal effects, a threshold of 1 ppb is conservatively protective of aquatic biota where exposure durations are sufficiently long for such effects to occur. For oil spills in open water, the acute threshold of 10 ppb would be appropriate, given short-term exposures that occur in the open ocean environment.

If THC in oil droplets entrained in the water column is to be evaluated as a risk or to define the Environment that May Be Affected (EMBA), 1 ppm (1 mg/L; 1,000 ppb) would be a sufficiently conservative threshold for oil droplets of all oil types and all weathering states, with 3 ppm (3 mg/L; 3,000 ppb) an appropriate threshold for crude oils. For light distillates and condensates, 1 mg/L (1 ppm; 1,000 ppb) is an appropriate threshold.

Introduction

An objective of oil spill risk assessments is to evaluate whether aquatic habitats and organisms could be exposed to oil or its constituents at concentrations above levels of concern at some time after a spill. Typically, oil transport and fate modelling (e.g., using RPS/TetraTech's Spill Impact Model Application Package [SIMAP], French-McCay 2003, 2004, French-McCay et al. 2021a)) is used to estimate over space and time: 1) the spread and concentrations of oil on the water surface, 2) concentrations of oil (i.e., entrained whole oil droplets) in the water column, 3) dissolved concentrations in the water column, and 4) standing of oil on shorelines. Floating and shoreline oil thresholds have been based on observed effects after spills. Water column concentrations have been compared to thresholds based on laboratory toxicity studies performed under controlled conditions designed to provide continuous exposures (e.g., typically without dilution and water column mixing) at sufficiently elevated concentrations to induce a measurable response.

In Australia, recent practice, based on government (NOPSEMA) guidance, has been to identify all areas exceeding conservative threshold concentrations at any instant in time after a spill as the Environment that May Be Affected (EMBA). An EMBA is not defined as an area where adverse impacts would be expected throughout the area, but rather where more analysis is to be performed to determine if impacts could occur or have occurred (i.e., if there is a spill) to some resources and their uses. The proponent is required to develop a scientific monitoring program for the EMBA's extent, as well as consult with stakeholders regarding potential impacts or concerns.

In determining the EMBA, consideration is to be given to four oil pathways: floating oil, entrained oil droplets, dissolved aromatic hydrocarbons, and stranded oil (on shorelines). The "low" (i.e., conservative) thresholds recommended by NOPSEMA (Environment Bulletin, April 2019) for defining the EMBA are:

- Floating oil as THC: $1 \text{ g/m}^2 = 1 \text{ m}^3/\text{km}^2$
- Dissolved aromatic hydrocarbons: 10 ppb
- Entrained oil as THC: 10 ppb
- Shoreline oil as THC: $10 \text{ g/m}^2 = 10 \text{ mL/m}^2$

The floating and shoreline oil thresholds were based on the literature reviews and analyses described in French McCay (2016) and French McCay et al. (2018). Based on the Bonn

Agreement Oil Appearance Code (BAOAC, Bonn Agreement, 2009, 2011), the floating oil threshold is the typical thickness of rainbow sheen. Potential for effects on socioeconomic resources may occur (e.g., fishing may be prohibited) if oil is visible on the water surface, i.e., sheens. Effects on socioeconomic resource uses may occur (e.g., recreation, tourism) above the shoreline threshold, such that this level of contamination may trigger the need for shoreline clean-up on amenity beaches. Thus, these are reasonable thresholds for establishing an EMBA.

NOPSEMA (2019) indicated that the dissolved and entrained oil thresholds are based on Bridges et al. (2018), French McCay (2016) and French McCay et al. (2018). While the dissolved threshold of 10 ppb is consistent with analyses in French McCay (2016) and French McCay et al. (2018), those publications did not advocate for 10 ppb as an entrained oil threshold. Entrained oil is whole oil mixed into the water column, whereas the compounds in oil that are soluble or semi-soluble and can dissolve represent a fraction of whole oil. Thus, the entrained oil threshold should be greater than that for dissolved. French McCay (2016) had argued that since the dissolved concentrations in the water column that cause toxicity are primarily polycyclic aromatic hydrocarbons [PAHs] that typically represent about 1% of the oil when fresh, and these components are lost from the oil as it weathers, an entrained oil threshold should be at least 100 times that for dissolved concentrations. More generally, crude oils contain 1-3%, and condensates contain up to 7% of these measurable PAHs. While the entrained oil threshold was said to be based on potential for exceedance of water quality triggers (NOPSEMA, 2019), it is unclear what the precise basis of the 10-ppb value would have been.

The EMBA is to consider any probability (i.e., even one trajectory out of hundreds of potential pathways) of exceeding the low threshold for any of the four oil pathways at any instant in time (determined by the model time step, assumed 1 hour). Consequently, recent EMBA's have encompassed large areas of the oceans surrounding Australia, owing to use of these conservative thresholds developed without consideration of the dynamic nature of an oil spill (i.e., dilution and dispersion in 3-dimensions and time), duration of exposure, the degree of weathering of the oil, the relative toxicity of different contaminants in oil, and the portion of the water column potentially exposed. An unintended consequence of using an overly conservative threshold is that resources for assessing impacts (e.g., water sampling, monitoring) would be spread across a large area, potentially diminishing the effectiveness of these efforts.

Of particular concern is the low threshold (10 ppb) for entrained oil recommended by NOPSEMA. The use of this threshold does not consider the bioavailability of constituents in the oil that drive aquatic toxicity, the changing composition of oil as it weathers, or the likelihood and duration of exposure. Oil fate and exposure modelling addresses the complexities of oil composition, weathering, partitioning in the environment, and organisms' behaviors. In view of these points, more appropriate entrained oil thresholds and considerations could be used for risk evaluations and establishing an EMBA, as described below.

Bioavailability

Dissolved Compounds in Oil are Bioavailable

Dissolved compounds are taken up into organisms directly through external surfaces and gills, as well as through the digestive tract. Thus, soluble and semi-soluble hydrocarbons and related compounds in oil are bioavailable, whereas insoluble compounds in oil are not bioavailable to aquatic organisms. Laboratory studies have shown that the dissolved hydrocarbons exert the most effects on aquatic biota (Carls et al. 2008; Nordtug et al. 2011; Redman 2017a; Gobas et al. 2018).

The fraction of oil with the most toxic effects to water-column and benthic organisms are lower-molecular-weight compounds (i.e., PAHs), which are volatile, and soluble or semi-soluble in water. As a result, they persist in the environment long enough for significant exposure to occur (Anderson et al., 1974, 1987; Neff and Anderson, 1981; Malins and Hodgins, 1981; McAuliffe, 1987; NRC 2003, 2005; Nordborg et al. 2018). The monoaromatic hydrocarbons (MAHs), including BTEX (benzene, toluene, ethylbenzene, and xylenes) and substituted benzenes, and the soluble alkanes also contribute to toxicity, but these compounds are highly volatile, so exposures of aquatic biota are minimal or negligible except when light oils are discharged at depth where volatilization does not occur (French-McCay 2002).

Within the soluble and semi-soluble hydrocarbons, toxicity is inversely related to solubility, typically quantified by the octanol-water partition coefficient (K_{ow}), a measure of hydrophobicity (Nirmalakhandan and Speece 1988; Hodson et al. 1988; Blum and Speece 1990; McCarty 1986; McCarty et al. 1992a, b; Mackay et al. 1992; McCarty and Mackay 1993; Verhaar et al. 1992, 1999; Swartz et al. 1995; French-McCay 2002; McGrath et al. 2009). The range of LC50s varies from ~10 µg/L (ppb) for 3-ring PAHs (which are semi-soluble) to ~10-100 mg/L (ppm) for the highly soluble BTEX compounds (French-McCay 2002). Thus, the toxicity of an oil hydrocarbon mixture is strongly related to the chemical composition, which varies as the oil weathers since the soluble and semi-soluble hydrocarbons are all volatile to varying degrees.

Effects of Oil Droplets

While entrained oil droplets could potentially affect organisms by mechanical means (i.e., fouling, interference with feeding), research has not definitively demonstrated direct effects of droplets as separable from the effects of components dissolved from the oil (Carls et al. 2008; Parkerton et al. 2023b). Contact of droplets with organisms' surfaces (external or by ingestion) could facilitate direct exposure to hydrocarbons if they become bioavailable (i.e., dissolve; Letinski et al. 2014; Redman et al. 2017a).

Oil Composition Affects Toxicity

Oil is a complex mixture of thousands of hydrocarbons and related compounds of varying physical, chemical, and toxicological characteristics, and therefore, varying environmental fates and effects on organisms. As discussed above, due to differing solubility, oil components vary by orders of magnitude in their potential to cause adverse effects, due to varying bioavailability. A

fraction of oil does not readily biodegrade, because the compounds involved are not bioavailable. Oils differ in composition and their fractions of potentially bioavailable components, and so not all oils are equally toxic.

Thus, the use of a simple sum of components to quantify toxicity is problematic, as the composition of dissolved components to which organisms are exposed in the field will differ from that in the laboratory study used to develop the toxicity threshold. Toxic effects levels vary by what is included in the summation and the relative concentrations in the mixture.

The approach used to quantify the additive effects of a mixture of hydrocarbons and related compounds is to use a Toxic Unit (TU) model (Swartz et al. 1995; DiToro et al. 2000; French-McCay 2002; Redman et al. 2017b; NASEM 2020; Parkerton et al. 2023a; see review by French-McCay et al. 2023). A TU for evaluating mortality is defined as the exposure concentration divided by the lethal concentration affecting 50% of exposed organisms (LC50). Thus, at TU=1, mortality is expected. For a mixture, the toxic units are additive. When for a mixture of chemicals at specific concentrations $\Sigma TU = 1$, the mixture is predicted to be lethal to 50% of exposed organisms. Use of the TU approach for evaluating effects addresses the varying composition of oil-derived mixtures, including changes in composition due to weathering. Examples of the use of the TU model for interpreting oil exposures are in Negri et al. (2021), Philibert et al. (2019, 2021), and Parkerton et al. (2023b).

Oil Weathering

As oil weathers, its composition changes due to volatilization and dissolution losses, and biodegradation (Payne et al. 1984, 1991; Stout et al. 2016; Boehm et al. 2016; Payne and Driskell 2018; Wade et al. 2018). When oil is floating, the volatile components evaporate rapidly, and the oil becomes more viscous as a result. Some of the semi-soluble hydrocarbons, which are less volatile, dissolve from the floating oil into the water column. Floating oil may be entrained into the water column by breaking waves, or oil may be released under water. Soluble and semi-soluble hydrocarbons dissolve from subsurface oil droplets, weathering the oil and making them more available to microorganisms. The uptake of hydrocarbons by microorganisms, referred to as biodegradation, reduces water column concentrations, and therefore toxic effects. The volatilization rates of hydrocarbons from surface slicks are faster than the dissolution rates. Thus, dissolution from oil droplets in the water column is the main source of concentrations dissolved in the water (French-McCay 2002).

Therefore, oil weathering leads to a preferential loss of the toxic components from the whole oil. The more bioavailable soluble and semi-soluble components evaporate and dissolve (and potentially cause acute toxicity in water column), leaving residual oil with lower potential for causing adverse effects. Entrained oil droplets weather rapidly because of their high surface area relative to their volume, owing to their small size. Microbes attach to their surfaces and readily take up soluble and semi-soluble components. Driskell and Payne (2018) provide evidence of these weathering processes being accelerated for smaller dispersant-treated oil droplets in their analyses of water samples collected during the Deepwater Horizon oil spill (DWHOS) in the Gulf of Mexico.

Forth et al (2017) measured total PAH concentration for 50 bioavailable PAHs and related heterocyclic compounds (TPAH50, components of the oil causing the most toxicity) in fresh MC252 (DWHOS) light crude oil (API 36) and weathered samples. Fresh MC252, artificially weathered, slick A, and slick B oils contained 1.06%, 1.38%, 0.31% and 0.33 TPAH50, respectively. The artificially weathered, slick A, and slick B oils were 27%, 68% and 85% depleted in TPAH50, based on ratios to C30-hopane (which does not dissolve or degrade). The artificially weathered oil (produced by heating fresh oil in the lab) had a mass loss of approximately 33% to 38% relative to the fresh oil, removing the BTEX but concentrating the TPAH50 slightly. Slick A originated from oil collected by various skimmer vessels near the MC252 well. Slick B was collected by a skimmer vessel on 19 July 2010, 4 days after the oil release was stopped. Thus, more depletion of TPAH50 from the oil occurred as oil remained at sea and moved away from the source.

TPAH50 depletions averaged $69 \pm 23\%$ for DWHOS floating oils analyzed by Stout et al. (2016). The samples were collected between 1.5 and 69 km from the MC252 source, but mostly less than 25 km from the wellhead. Samples taken more than 10 km from the well were $>70\%$ depleted in TPAH50. Floating oil samples collected less than 10 km from the wellhead were 12 to 91% depleted in TPAH50, averaging $54 \pm 20\%$. The variability was due to newly surfacing oil mixing in with more weathered older oil with much lower TPAH50 content due to rapid evaporation.

Figure 1 provides an example of the effects of oil weathering for floating oil from the DWHOS, as modelled by French-McCay et al. (2021a,b). While the oil and gas release from 1500 m continued until 15 July 2010, freshly released oil was mixed with weathered oil, such that after the first few days of the spill, the oil on average contained $<1\%$ of soluble and semi-soluble components (i.e., BTEX, substituted (C3- and C4-) benzenes, PAHs and heterocycles). The PAHs and heterocycles (i.e., TPAH50) remain in the water much longer than the highly volatile and soluble MAHs; hence contribute most to aquatic toxicity.

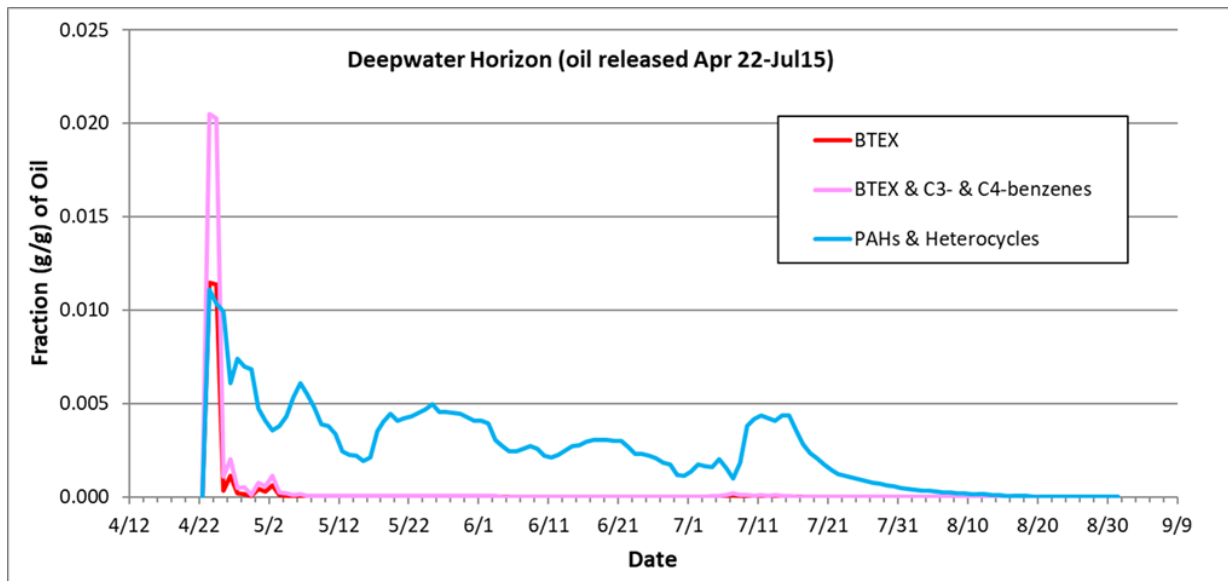


Figure 1. Average fraction of oil represented by soluble and semi-soluble aromatic components over time for the DWHOS, as modelled by French-McCay et al. (2021a,b).

Boehm et al. (2016), Payne and Driskell (2017, 2018), Driskell and Payne (2018), and Wade et al. (2018) evaluated water sample chemistry results from the DWHOS field monitoring collections overseen by the US National Oceanic and Atmospheric Administration (NOAA). The results showed considerable weathering with distance from the well, i.e., with time in the water column. The MAHs were shown to be rapidly depleted from the entrained oil droplets before the oil reached the surface. Semi-soluble PAHs were depleted both as the oil rose through the water column (Boehm et al. 2016; Payne and Driskell 2017, 2018; Driskell and Payne 2018; Wade et al. 2018) and as it moved away from the source at the surface (Stout et al. 2016). Further, the compositional PAH profiles in the subsurface water samples allowed for the quantification of the fraction of PAHs in droplets versus dissolved phases (see methods in Payne and Driskell 2017, 2018). The droplets were highly weathered and contained much lower concentrations of TPAH50 than the fresh MC252 oil (Payne and Driskell 2017, 2018; Driskell and Payne 2018).

Highly weathered petroleum residuals have not been shown to have adverse effects on aquatic organisms, i.e., they are not acutely toxic in the water column. Therefore, effects levels for the bioavailable soluble and semi-soluble components should not be applied to whole oil droplets entrained in the water column, particularly for weathered entrained oil droplets.

Consideration of Duration of Exposure

Time for Uptake of Hydrocarbons

An additional consideration is that LC50s and other toxicity endpoints vary considerably with exposure duration over the range of several hours to several days (Sprague, 1969; Abel, 1980; Mancini, 1983; Bailey et al., 1985; McAuliffe 1987; McCarty et al. 1992a, b). Effects thresholds are an order of magnitude higher for a few hours of exposure than they are for several days of exposure (McCarty et al. 1992a, b; French-McCay 2002; Lee et al. 2002; Bejarano et al. 2014; Mackay et al. 2017) due to the hydrocarbon accumulation over time up to a critical tissue concentration that causes mortality. Exponentially higher concentrations are required to achieve equivalent effects over shorter durations (e.g., Figures 2 and 3). The accumulation is slower for more hydrophobic (i.e., less soluble) compounds (Veith et al., 1983; Abernethy et al. 1986, 1988; Verhaar et al., 1992, 1999; DiToro et al. 2000; DiToro and McGrath 2000; see reviews in McCarty et al. 1992a, b; Verhaar et al., 1992; French-McCay 2002; French-McCay et al. 2023). Thus, the LC50s for PAHs are more variable with duration of exposure than are the LC50s for BTEX.

Most bioassays are performed under 48 to 96 hours of exposure to allow concentrations to accumulate in the tissues of the exposed organisms, where they may have adverse effects. Swartz et al. (1995) argued that bioassays for PAHs should be to at least 10 days of exposure in order to allow sufficient time for the PAHs to be taken up into the organisms and reach steady state between uptake and depuration. The focus on Swartz et al.'s (1995) study was PAH contamination in sediments. For long, essentially infinite exposure durations, the measured lethal endpoints are termed incipient LC50s (or other percentage mortality levels; McCarty et al. 1992a, b; Verhaar et al., 1992; French-McCay 2002). The >48-hour and incipient LC50s are

conservatively low for shorter-duration exposures (French-McCay 2002). Animals can be unaffected by short-duration exposures to concentrations that could affect them if exposed for days or weeks. Organisms can recover from sublethal exposures, by elimination of toxins from tissues.

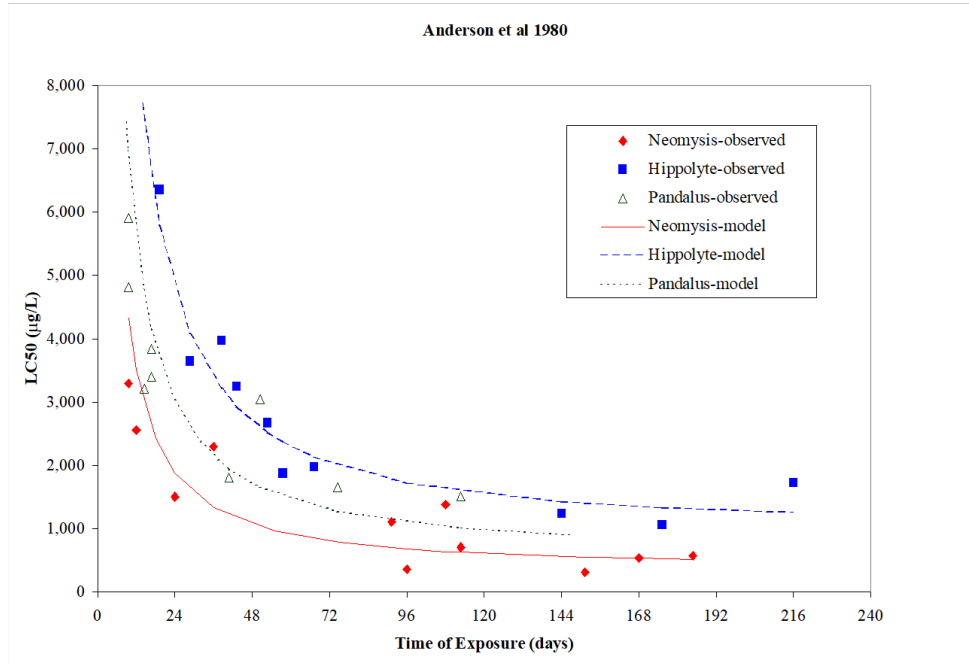


Figure 2. Lethal concentrations (LC50) versus duration of exposure in experiments reported by Anderson et al. (1980).

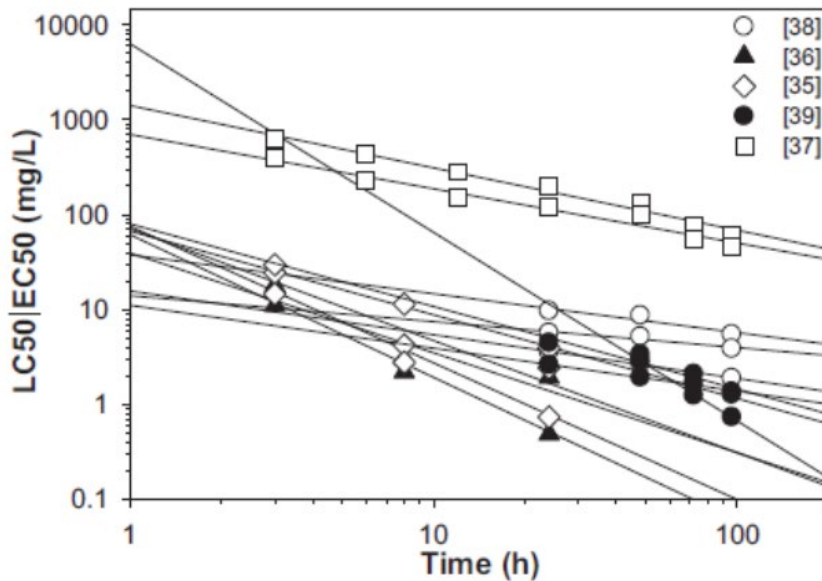


Figure 3. Lethal and effects concentrations affecting 50% of test organisms (LC50, EC50) versus duration of exposure in experiments reviewed by Bejarano et al. (2014; see source for original citations).

Oil Dynamics

For most oil spills, exposures of water column biota to concentrations above potential thresholds of concern are typically on time scales of minutes to hours, even for spills lasting weeks or months because of the varying movements of the oil in the water, dilution and losses to biodegradation and volatilization. Furthermore, the concentrations vary in time over the short exposure periods (McAuliffe et al. 1980, 1981; McAuliffe 1987; Lunel 1994; French McCay 2002, 2004; Bejarano et al. 2014; French-McCay et al. 2023).

Marine and coastal waters are not static systems, as the oil rapidly spreads and moves through space over time. Oil is concentrated floating on the surface, along shorelines, and as it settles to sediments, while it is dispersed (diluted) in three-dimensional space in open water. When floating oil is entrained, a portion refloats immediately, more so for larger droplets originating from more viscous oils. Entrained oil in smaller droplets than those that refloat, rapidly disperses into the water column away from the surface. Currents and dispersion in the water column, combined with differential buoyancy of oil droplets of various sizes, rapidly dilute concentrations of entrained droplets. Therefore, oil exposures in open water are typically of short duration.

While it is recognized that in offshore open water, oil exposures are ephemeral, toxicologists have expressed concerns that exposures would be much longer where oil may accumulate. Embayments in coastal areas can act as low-energy, low-mixing environments where hydrocarbons may accumulate and persist (Hook 2020). However, to accumulate the entrained oil would need to surface, come ashore or settle to sediments in these areas. While oil is entrained in the water, the concentrations do not physically concentrate, rather they dilute by turbulent diffusion. The SIMAP model evaluates entrained oil surfacing and accumulation of oil at the surface and in sediments, such as in nearshore areas (which occurs along shorelines). Exposure concentrations for floating and shoreline oil address these potential exposures. Use of floating and shoreline oil thresholds identify areas where there would be potential for oil accumulation and potential impacts on sensitive species and their life stages. Furthermore, floating oil and entrained oil do not move in the same manner, as the floating accumulated oil is transported by wind effects on the water surface as well as by surface currents, whereas entrained oil moves with subsurface currents. Thus, the entrained oil “footprint” is not indicative of where oil might accumulate.

Figure 4 provides an example of the changing composition of dissolved hydrocarbons and the short duration of exposure to high concentrations in a tank containing floating crude oil held in place by the containment (Payne et al. 1984). As the oil weathered, concentrations below the slick decreased and became dominated by PAHs. If the floating oil were in the ocean, the dissolved components would be spread by the movement of the oil over the surface and by current shear, such that concentrations would be much lower, more ephemeral, and patchy. Bejarano et al. (2014) reviewed measurement data from field trials finding oil concentrations decreased rapidly (in minutes) after oil release (Figure 5).

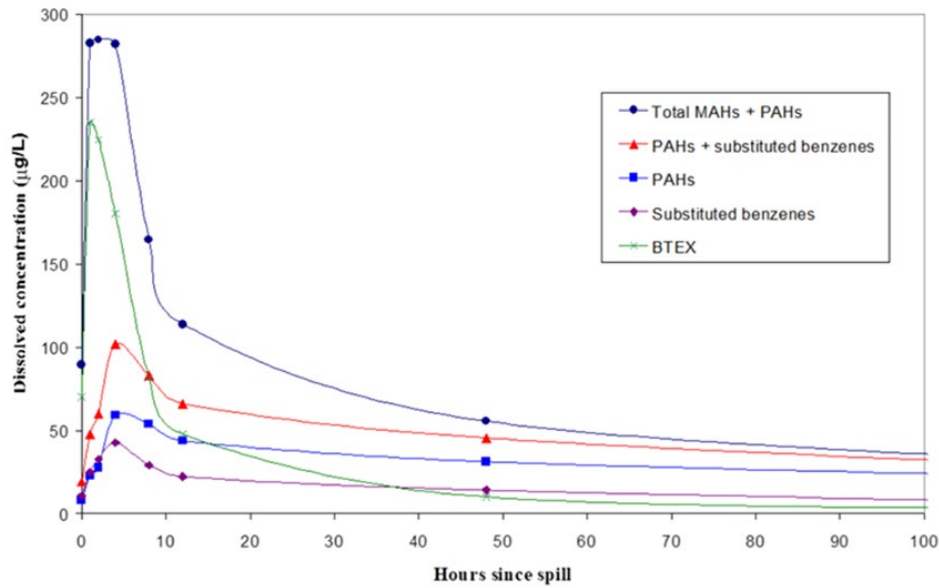


Figure 4. Dissolved concentrations versus time in a tank (data from Payne et al. 1984)

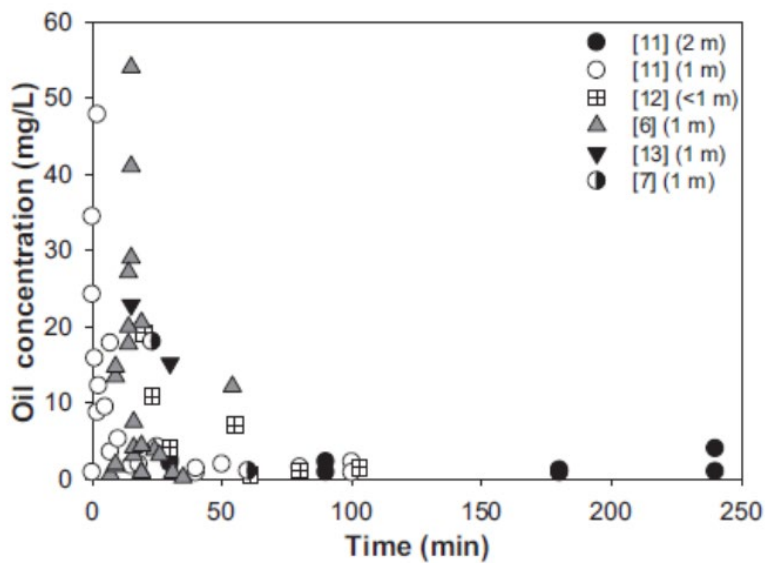


Figure 1. The relationship between measured oil concentrations in the upper water column (≤ 2 m) versus time from field trials at sea. Data represent oil concentrations from physically ([11], black circles) and chemically enhanced dispersion of oil ([11], white circles; [6,7,12,13]).

Figure 5. Measured oil concentrations versus time after release from field trials (from Bejarano et al. 2014; see source for original citations).

Organism Behavior

Organisms are not distributed evenly in the environment and are often more concentrated in coastal areas and structural habitats such as coral reefs, rocky reefs, seagrass beds, and seaweeds. Early life history stages of fish and invertebrates are concentrated in these habitats and also in surface waters. In addition, animals move under their own volition and passively (as plankton) in currents, while animals that are attached to structures or otherwise stationary, would be exposed to oil components in plumes that would pass by them. Thus, the duration of exposure to hydrocarbons depends on the distribution of the organisms and their entrainment or movements in relation to the dynamics (changes in) the oil contaminants plume.

A recent modelling study by French-McCay et al. (2024) provides examples of exposure patterns planktonic and stationary organisms might experience for different oil types and spill situations. For example, Figure 6 shows exposures over time for stationary (non-mobile) and planktonic organisms for a modelled 1000 bbl (159 m³) spill of a light crude (Hibernia) in 7 m/s winds.

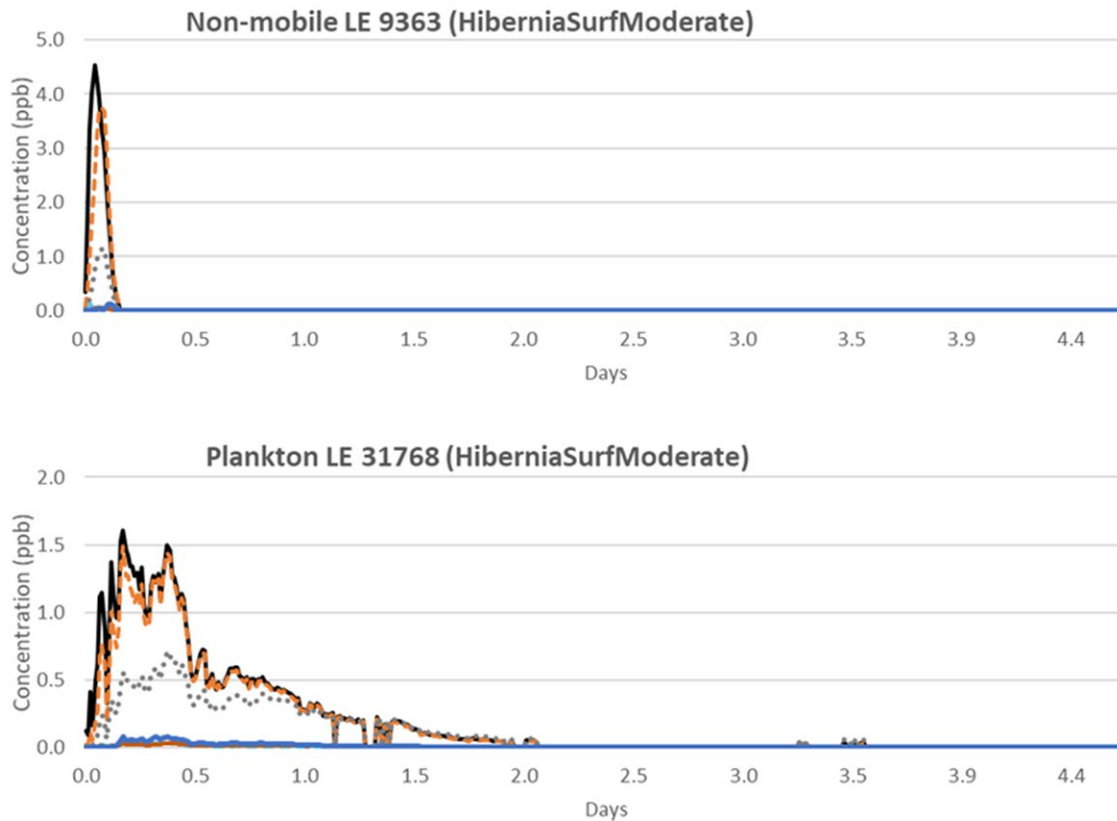


Figure 6. Example exposures to various dissolved oil components over time for stationary (non-mobile) and planktonic organisms after a 1000-bbl spill of light crude.

Note that organisms would need to encounter dissolved concentrations or entrained droplets for any adverse effects to occur, but many are not present in the same depth range as the oil contamination (e.g., surface waters). Other organisms might move through the area of contamination, where their exposure would be for shorter duration than for plankton or stationary

organisms. Thus, a 2-dimensional map of maximum concentrations in the vertical dimension, a typical summary presentation of oil modelling results, would not apply to the entire water column. French-McCay et al. (2015a,b) evaluated and modelled vertical and horizontal distributions of fish and invertebrate species and life stages to quantify injuries (French-McCay et al. 2015c) due to the Deepwater Horizon oil spill, taking into account organisms' vertical and other habitat preferences that affected their likelihood and duration of exposure to dissolved oil components.

Measurements of Oil Concentrations as Total Hydrocarbons

Measurement of the concentration of oil in water, whether in the field or in laboratory studies, is complicated and not all constituents can be identified and measured individually. There are many analytical chemistry techniques used to estimate total hydrocarbons in water, and each of these only measures a portion of the hydrocarbons in oil (Redman et al. 2012; Redman and Parkerton 2015; Yang et al. 2017, Wade et al. 2018; Parkerton et al. 2023a). Recent guidance (Redman and Parkerton 2015; Dettman et al. 2023) recommends measuring BTEX and C5–C9 aliphatics (“volatiles”) using purge-trap GC–MS (Gas Chromatograph-Mass Spectrometer), analysis of parent and alkyl PAHs using GC–MS (with target analytes including C0–C4 alkyl decalins and C0–C4 alkyl phenols), and C9–C40 saturate hydrocarbons by GC/FID. Older studies often did not include this detail and range of analyses (see review in Bejarano et al. 2023).

Measurements of C8 to C50 hydrocarbons in oils using these techniques by Yang et al. (2017) identified only 20-30% of the compounds, the remainder of the total petroleum hydrocarbon (TPH) being the unresolved complex mixture (UCM). Mass recoveries (using the presently recommended methods) for gasoline, kerosene, and gas oil are typically >95%, whereas the mass recoveries for heavier substances in crude oils and heavier refined products are often <30%. Mass recoveries of condensates would be somewhat higher than for crude oils but <95%.

The uncharacterized mass (UCM) is due to high-molecular-weight alkanes, asphaltenes, resins, and other large molecules that are either not eluted from chromatographic columns or not well-resolved by gas chromatographic techniques that are available (Redman et al 2012; Yang et al. 2017). In the discussion below THC will refer to the true concentration of total hydrocarbons (and related compounds), whereas TRH will be used to refer to the measured (i.e., recoverable) portion of the THC.

As only some of the compounds in oil are measurable individually, and because of the desire to be inclusive of effects from hydrocarbons in oil droplets (e.g., the entrained droplets in SIMAP model outputs) as well as the dissolved phase, aquatic toxicologists have attempted to use TRH as a metric for evaluating toxicity of oil exposures. However, given that TRH does not actually measure THC and the complexities described above, among others related to experimental design and conditions, development of lethal toxicity values (e.g., LC50s) or sublethal thresholds based on total hydrocarbons (THC) is problematic. Furthermore, the hydrocarbon compositions in exposure media are highly variable from experiment to experiment, leading to estimated toxicity thresholds that range over many orders of magnitude, as is evident from reviews of these data (e.g., see NRC 2003; NASEM 2020).

Oil Bioassays

Toxicity studies often have used experimental systems containing media preparations made by mixing oil in water long enough to bring the composition of oil components into equilibrium, i.e., Water Accommodated Fractions (WAFs) of oil. WAFs are purposely static, and thus, do not represent variable field compositions and changing concentrations. WAFs can be made with fresh or weathered oil, but bioassays using a particular WAF do not account for weathering changes in the field. Further, as the concentrations of individual compounds in WAFs change from test to test and the individual compounds vary in toxicity, effects levels based on total PAH or TRH are highly variable. LC50s or other toxicity metrics based on nominal additions of oil to media (in an attempt to measure a THC effects level) are unreliable because some compounds evaporate, adsorb to test containers, bioaccumulate, and degrade in test chambers, and the oil component mixture composition is unknown (Hodson et al. 2019).

The 2023 Special Issue of Aquatic Toxicology (Loughery et al. 2023; Stubblefield et al. 2023; Alloy et al. 2023; Parkerton et al. 2023a,b; French-McCay et al. 2023; Dettman et al. 2023; Bejarano et al. 2023; Lee et al. 2023) contains recommendations for oil toxicity test methods, including reviews of the issues summarized here. Loughery et al. (2023), Stubblefield et al. (2023), Alloy et al. (2023), Parkerton et al. (2023a,b), Dettman et al. (2023), Bejarano et al. (2023), and Lee et al. (2023) provide guidance for aquatic toxicity studies, building on and updating the standardized toxicity test protocols developed by the Chemical Response to Oil Spills: Ecological Effects Research Forum (CROSERF; Aurand and Coelho 2005, Singer et al. 2000).

Thus, toxicity data developed using WAFs should not be applied directly to field conditions to evaluate effects. TU modelling should be used to evaluate the toxicity in the bioassay mixture (Parkerton et al. 2023a), and the toxicity of the mixture in the field, for which the composition and toxicity will differ. Whole oil bioassays using WAFs or other preparations exposing organisms to dissolved components and entrained oil are useful and important for determining species and life stage sensitivities and for validating the predictions of toxicity models based on additive effects of oil components (French-McCay et al. 2023).

WAF-based effects levels have been used to develop concentration thresholds above which effects might be expected. Note that even if conditions in the field could be considered quasi-steady state (i.e., in an enclosed quiescent water body where oil dilution is prevented by geography and where weathering is slowed by environmental conditions and isolation from the atmosphere) and the experimental oil composition of a test were representative of the field under the specific conditions tested, the experimental effects level would over-estimate toxicity to the extent it is applied to modelled oil, as the model accounts for the entire mass of oil, as opposed to what was measurable in the test.

Recommendations for Thresholds

PAH-Based Threshold for Dissolved Hydrocarbons

Because most of the toxicity from dissolved hydrocarbons and related compounds is due to PAHs and related compounds, particularly in surface waters, PAH-based lethal and sublethal thresholds are typically used to evaluate the risks of oil contamination. In many bioassays, measured total PAH concentrations have been used to quantify toxicity endpoints, with the understanding that the measured PAH concentrations reflect the effects of any dispersants applied (which increase concentrations in the water, Bejarano et al. 2014) and other unmeasured constituents associated with the PAHs are contributing to the observed toxicity (Bejarano et al. 2017; Forth et al. 2017; Parkerton et al. 2023a), although with less effect (French-McCay 2002).

PAH concentrations on the order of tens to hundreds of micrograms per liter ($\mu\text{g/L}$, i.e., ppb) have been shown to be acutely toxic to aquatic biota (French-McCay 2002, 2016). French-McCay (2002) reviewed available laboratory oil and PAH acute bioassay data, finding that 95% of species and life stages exhibited 50% mortality between 6 and 400 ppb ($\mu\text{g/L}$) total PAH concentration. Based on this result, the 6 ppb total PAH value would be protective of 97.5% of species and life stages. Early life history stages of fish appear to be more sensitive than older fish stages and invertebrates. Bioassay data compiled by French-McCay (2002) indicate that 96+ hour LC50s of juvenile and adult fish are >100 ppb. Bejarano et al. (2017) developed species sensitivity distributions (SSDs) for acute bioassay tests using WAFs. Bejarano et al (2017) found that the 5th percentile sensitivity (Hazardous Concentration for 5%, HC5, Posthuma et al. 2002, which is protective of 95% of species and life stages) for lethality ranged from 28 to 282 ppb total PAH concentration for fish and invertebrates from a wide variety of latitudes and habitats, a range similar to that predicted by French-McCay (2002). Note that in recent years the 5th percentile for a range of species sensitivities in toxicity tests has come to be used in practice for developing thresholds, and this is termed the HC5 (Barron et al. 2013; Fox et al. 2021; Stubblefield et al. 2023). Thus, for acute lethality and to the nearest order of magnitude (given uncertainties), total PAH LC50s generally range from about 10 ppb for sensitive early life history stages to 300 ppb or more for less sensitive species and older life stages.

Sublethal effects may occur at lower concentrations. For PAHs, USEPA (2003, 2008) has derived and used a factor 10 to estimate a sublethal effects threshold (Final Chronic Value, FCV, or Predicted No Effect Concentration, PNEC) based on a lowest acute toxicity-based endpoint such as the HC5 based on 96-hour LC50 tests. In a recent study by McGrath et al. (2018), the acute-to-chronic ratio (ACR) for hydrocarbons was found to average 5.22 (range 1.7-12 for the 10th and 90th percentiles of the observations, including consideration of one high outlier), therefore, the factor 10 is conservatively protective. Thus, the sublethal effects threshold (PNEC) for PAHs would be 1 $\mu\text{g/L}$ (ppb) where exposure durations are sufficiently long for such effects to occur. For oil spills in open water, the acute threshold of 10 ppb would be appropriate, given short-term exposures that occur in marine and coastal waters. Further details are available in French-McCay (2009) and French-McCay et al. (2018). These total PAH thresholds have been used in many environmental risk assessments (e.g., French McCay et al., 2005, 2012, 2018; NOAA, 2013).

In addition, photo-chemical reactions upon exposure of oil or contaminated organisms to sunlight produces photoproducts (new compound structures, by photo-modification) or free radicals in organisms (photosensitization to activated PAHs and related compounds) that could adversely affect exposed aquatic organisms. Photosensitization can occur in early life stages of fish and invertebrates that are translucent or transparent and vulnerable since they are undergoing development (Alloy et al. 2023). Specific thresholds have not been developed that account for photo-toxicity. However, studies reviewed by Alloy et al. (2023) indicate an effects threshold accounting for phototoxicity would be approximately 1 µg/L (ppb). Exposure durations to both PAHs and light would need to be sufficient for such effects to occur. Further details are available in French-McCay et al. (2018) and Alloy et al. (2023).

THC-Based Threshold for Entrained Droplets

The concentrations of entrained droplets output by the SIMAP model represent hydrocarbons and other compounds that are mostly not bioavailable due to the weathering (volatilization, dissolution, and degradation) accounted for in the model. The soluble and semi-soluble fractions dissolve from the droplets over time, and a potential effects analysis based on the dissolved hydrocarbons characterizes their risk. However, to satisfy concerns that entrained droplet hydrocarbons might infer some risk, THC-based thresholds have been used.

In addition to considering total PAHs, Bejarano et al. (2017) developed SSDs using *measured* TPH (i.e., TRH; aromatic and aliphatic hydrocarbons [C9-C44], which includes parent and alkylated homologue PAHs and/or parent naphthalene) as a metric. The range of HC5s was found to be 1 to 5.6 ppm (mg/L) as TRH for WAF preparations from crude oils with API densities ranging from 25 to 44. The HC5 for light refined Group 2 fuel oil (API 35 – 45) was 0.5 mg/L TRH. The TRH HC5 decreased with higher API (lower oil density), i.e., with oils that have a higher percentage of light hydrocarbons (C9-C44) including PAHs. WAFs included aqueous exposure media prepared by physical (low energy water accommodated fraction, LEWAF; and moderate energy WAF or MEWAF) or chemically enhanced oil dispersion (chemically enhanced water accommodated fraction, CEWAF). Note that the TPH measurements were on WAF media, which are preparations that purposely select for the soluble hydrocarbons and remove the insoluble larger hydrocarbons in the oil (Redman and Parkerton 2015). Thus, the TPH measurements of the WAF media are on a portion of the oil, not the full oil (see also Parkerton et al. 2023a for further detail).

This limitation also exists for measurable TPH (i.e., TRH) thresholds presented in Smit et al. (2009), which has been used as a proxy THC threshold for oil spill modelling in the past. Furthermore, the thresholds developed in Smit et al. (2009) are for no-observed-effect concentrations (NOECs) based on sublethal effects of chronic exposures of 7 to 183 days (e.g., the lowest test NOEC was for a 33-day exposure). As discussed above (and in French-McCay et al. 2023), such long exposure times do not occur in open (marine and coastal) waters after oil spills and effects concentrations are much higher for short-term exposures.

The ANZECC 2000 guidelines and derivation of a TPH-based sublethal threshold include a review of a few studies available at the time but depend on the analysis by Tsvetnenko (1998) for a threshold. Tsvetnenko (1998) followed US EPA methods (Stephan et al. 1985; US EPA 1994) to develop SSDs and HC5s but did not recognize that TPH measurements of Water-Soluble

Fractions (WSF) and WAFs do not represent the same composition as the THC in the field. They are biased towards a mix of soluble and semi-soluble components that are the toxic components of the oil (as explained above). Tsvetnenko (1998) developed a lethal HC5 for TPH of 168 µg/L (ppb), and then applied an ACR of 25 to obtain a sub lethal threshold of 7 µg/L (ppb) as TPH. Note that recent reviews do not support this ACR (McGrath et al. 2018). An ACR=10 would be sufficiently protective for chronic exposures. Even if it were assumed that TPH measurements on WSF/WAF media were representative of THC (which they are not), the HC5 of 168 µg/L should be corrected (upward) for the fraction of the THC of the source oil actually measured by the TPH analyses used and should not be corrected (downward) for the volatilization loss (in table 8.3.24, ANZECC 2000 appears to have lowered the measured TPH toxicity values by a factor of 10, based on Hamoda et al. 1989). The needed data are not available, but likely the correction would be an order of magnitude, given the time and nature of those TPH measurements and apparent volatilization in the experiments. However, it is more appropriate to use recent data where better analytical methods were used, if THC is to be the basis of a threshold.

Because PAHs are the most toxic components of oil and crude oils typically contain about 1-3% PAHs by mass (French-McCay 2002; Forth et al. 2017), the entrained oil threshold expressed as total hydrocarbon concentration (THC, not TPH) should be at least 330-1000 µg/L (330-1000 ppb) for *fresh* crude oil, corresponding to the dissolved threshold of 10 ppb (which is based on total PAHs). However, as oil weathers, PAHs are lost to volatilization, dissolution, and degradation and the ratio of the entrained to dissolved threshold should be higher than this range. Thus, the whole-oil threshold of 1,000 ppb (1 ppm) is conservative (low, and highly protective of aquatic resources).

Based on the review of toxicity studies by Bejarano et al. (2017), THC lethal effects levels of 28-300 mg/L (28-300 ppm) were found for a range of crude oils for species from all geographical areas globally. An exposure concentration of 1,000 ppb (1 ppm or 1 mg/L) of measurable TPH was deemed a low level of concern for sensitive life stages in marine organisms by Kraly et al. (2001). In reviews by NRC (2005) and NASEM (2020), 1,000 ppb (1 mg/L) was found to be at the low end of the range where sub-lethal impacts from acute exposure have been observed.

Correcting for fraction measurable, this indicates a THC-based threshold of 3,000 ppb would be appropriate for modelled entrained crude oil. Thus, a THC threshold of 3 mg/L (3 ppm; 3,000 ppb) is an appropriate threshold for crude oils for use in risk assessments and for defining an EMBA. For light distillates and condensates, 1 mg/L (1 ppm; 1,000 ppb) is an appropriate threshold.

Consideration of Duration of Exposure for Developing Thresholds

The use of LC50s for >48 hours of exposure, or chronic endpoints for longer exposure times, as thresholds for oil spills is highly conservative. Acute aquatic toxicity thresholds would be sufficiently conservative for oil spills in marine and other open waters (as opposed to ponds or other contained systems). There is no need for an ACR correction for evaluating acute toxicity to aquatic biota from oil spills in open waters.

In the ANZECC 2000 guidelines, no observable effects concentrations (NOECs) after long exposure durations are recommended. This is highly protective for chronic steady state

concentrations of hydrocarbons. Again, since oil spill water column exposures are acute, and durations of exposure are for hours and not days, acute toxicity data (e.g., Final Acute Value, FAV) should be used and there should be no ACR conversion.

To in some part compensate for the effect of exposure duration on effects levels, a higher threshold appropriate for short duration exposures could be used. Alternatively, the modelled exposure concentrations could be time averaged over 1 to several hours.

Another approach would be to use a dose metric as a threshold. The LC50s quoted above are typically for 96 hours of exposure. Thus, the 10-ppb dissolved PAH threshold would be equivalent to 960 ppb-hours of exposure. The 1,000 ppb THC threshold would be equivalent to 96 ppm-hours. Model results could be integrated to calculate the ppb-hours of exposure, therefore addressing the duration of exposure issue.

Conclusion

Recommended Entrained Oil Thresholds

For the dissolved hydrocarbons, the 10 ppb PAH threshold is conservatively protective of aquatic biota considering acute effects from short-term exposures that could occur following oil spills in ocean waters. If THC in oil droplets is to be evaluated as a risk, 1 mg/L (1,000 ppb; 1 ppm) would be sufficiently conservative for oil droplets of all oil types and all weathering states, with 3 mg/L (3,000 ppb; 3 ppm) an appropriate threshold for crude oils. For light distillates and condensates, 1 mg/L (1,000 ppb; 1 ppm) is an appropriate threshold.

Limitations of Using Screening Thresholds

When using thresholds, it should be noted that toxicity is determined by the specific mix of hydrocarbon concentrations in the exposure medium and the toxicity of each component. Use of a THC threshold does not address the complexities of the mixture of hydrocarbons of various toxicities. For these reasons, recent evaluations of the aquatic effects of oil have focused on the most toxic and bioavailable components (i.e., dissolved hydrocarbons) and have not used measured TPH or THC as a metric. The focus of a risk assessment should be on the dissolved hydrocarbon exposure, along with floating oil and shoreline oil, as opposed to entrained oil droplets. The review series (Loughery et al. 2023; Stubblefield et al. 2023; Alloy et al. 2023; Parkerton et al. 2023a,b; Dettman et al. 2023; Bejarano et al. 2023; Lee et al. 2023; French-McCay et al. 2023) provides guidance for aquatic toxicity studies and their application to risk assessments and modelling-based analyses.

It should be recognized that the use of potential effects thresholds to summarize oil spill model results from a dynamic model such as SIMAP is a simplified approach that cannot address all the complexities of oil exposures and effects occurring in the field (Hook 2020; French-McCay et al. 2023). French-McCay et al. (2023) review a range of approaches (i.e., aquatic toxicity modelling tiers), with increasing complexity and data requirements, along with accompanying uncertainties, to address the varying needs of spill responders and risk/impact assessors. At the simplest level (Tier 1), modelling is used to estimate maximum exposure concentrations of oil or some fraction of oil at any time after a spill. These spatially defined concentrations are compared to screening

thresholds to evaluate areas or volumes at risk for potential adverse effects. However, threshold approaches cannot readily address the varying composition of oil as it weathers, differing bioavailability via the dissolved phase, or changing effects levels with duration of exposure. Tier 2 and Tier 3 modelling approaches consider the dynamics of oil movements and duration of exposure that would be experienced by aquatic biota, while still being based on an assumed representative mixture of components causing effects. A Tier 4 modelling approach considers the changing composition of the oil components using a TU approach, which could be focused toward effects on sensitive species and life stages. Population level effects modelling called for by Hook (2020) among others would require detailed modelling of species and life-stage specific uptake, metabolic, biotransformation, and elimination processes, along with effects on survival, growth and reproduction. Considering ecosystem level effects would require considering multiple species and interrelationships between species and the habitats they occupy in a mechanistic manner, as not all situations could be experimentally evaluated or monitored in the field. The feasibility and uncertainties of the more detailed higher tier approaches need to be considered when planning any assessment.

Considerations Regarding Defining EMBAs

It should be noted that exceedance of threshold does not infer adverse effects would occur. This has been understood by NOPSEMA (2019) and others. If a threshold is very conservative, use of the EMBA delineation would not focus monitoring on locations where there is a potentially high risk of consequences. Near the outer bounds of an EMBA, defined by an entrained oil threshold of 10 ppb (as recommended by NOPSEMA 2019), there is a very low probability of concentrations exceeding 10 ppb, the exposure durations are typically minutes to a few hours, and the oil is highly weathered (and so less or not toxic). Thus, a more realistic threshold would be appropriate, and it need not be protective of every single individual organism that might possibly encounter one droplet of entrained oil, regardless of likelihood or its ability to cause any adverse effect.

Monitoring should focus on locations most at risk of consequences, as opposed to those with marginal, if any, risk of consequences. Such locations include near the release site, in shallow waters where oil could accumulate, in sensitive habitats, and in areas where there are species with protection status. Monitoring to measure any change is challenging even for very large spills due to natural variability and the large volumes of oceanic waters needing to be sampled (as noted by Fodrie et al. 2014, Hook 2020, and other authors). Sampling effort, experimental design and analytical chemistry capabilities need to be carefully considered, otherwise resources would be wasted. Monitoring areas where exposures are ephemeral would be difficult if not infeasible, and unlikely to detect effects. Thus, even higher thresholds than those recommended here could be used to identify areas where monitoring would be appropriate and potentially successful in detecting change or effects.

References

- Abel, P.D., 1980. Toxicity of gamma hexachlorocyclohexane (Lindane) to *Gammarus pulex*: mortality in relation to concentration and duration of exposure. *Freshwater Biology* 10:251-259.
- Abernethy, S., A.M. Bobra, W.Y. Shiu, P.G. Well, and D. Mackey, 1986. Acute lethal toxicity of hydrocarbons and chlorinated hydrocarbons to two planktonic crustaceans: the key role of organism-water partitioning. *Aquatic Toxicology* 8: 163-174.
- Abernethy, S.G., D. Mackay and L.S. McCarty, 1988. "Volume fraction" correlation for narcosis in aquatic organisms: the key role of partitioning. *Environ. Toxicol. Chem.* 7: 469-481.
- Anderson, J.W., J.M. Neff, B.A. Cox, H.E. Tatem, and G.M. Hightower, 1974. Characteristics of dispersions and water-soluble extracts of crude and refined oils and their toxicity to estuarine crustaceans and fish. *Marine Biology* 27: 75-88.
- Anderson JW, Kiesser SL, Blaylock JW. 1980. The cumulative effect of petroleum hydrocarbons on marine crustaceans during constant exposure. *Rapp P-v Reun Cons int Explor Mer* 179:62-70.
- Anderson, J.W., Riley, R.G., S.L. Kiesser, and J. Gurtisen, 1987. Toxicity of dispersed and undispersed Prudhoe Bay crude oil fractions to shrimp and fish. *Proceedings 1987 Oil Spill Conference (prevention, Behavior, Control, Cleanup), Tenth Biennial, American Petroleum Institute, Washington, DC, p235-240.*
- Alloy, M.M., Finch, B.E., Ward, C.P., Redman, A.D., Bejarano, A.C. and Barron, M.G., 2023. Recommendations for Advancing Test Protocols Examining the Photo-induced Toxicity of Petroleum and Polycyclic Aromatic Compounds. *Aquatic Toxicology* 256, 106390. <https://doi.org/10.1016/j.aquatox.2022.106390>.
- Australian and New Zealand Environment and Conservation Council, Agriculture and Resource Management Council of Australia and New Zealand (ANZECC/ARMCANZ). 2000. Australian and New Zealand guidelines for fresh and marine water quality, Volume 2, Aquatic Ecosystems — Rationale and Background Information. Canberra (AU), ISBN 09578245 0 5 (set), ISSN 1038 7072. [accessed 2018 Jun 19]. <https://www.waterquality.gov.au/anz-guidelines/resources/previous-guidelines/anzecc-armcanz-2000>
- Bailey, H.C., D.H.W. Liu, and H.A. Javitz, 1985. Time/toxicity relationships in short-term static, dynamic, and plug-flow bioassays. *Aquatic Toxicology and Hazard Assessment: Eighth Symposium, ASTM STP 891*, R.C. Bahner and D.J. Hansen, eds., American Society for Testing and Materials, Philadelphia, 1985, p.193-212.
- Barron, M.G., M.J. Hemmer, and C.R. Jackson. 2013. Development of aquatic toxicity benchmarks for oil products using species sensitivity distributions. *Integrated Environmental Assessment and Management* 9: 610–615. DOI: 10.1002/ieam.1420.

Bejarano A.C., Clark J., and Coelho J.M. 2014. Issues and challenges with oil toxicity data and implications for their use in decision making: A quantitative review. *Environmental Toxicology and Chemistry*. 33(4): 732–742.

Bejarano, A.C., W. W. Gardiner, M. G. Barron, and J. Q. Word. 2017. Relative sensitivity of Arctic species to physically and chemically dispersed oil determined from three hydrocarbon measures of aquatic toxicity. *Marine Pollution Bulletin* 122 (2017) 316–322.

Bejarano, A.C., Adams, J.E., McDowell, J., Parkerton, T.F. and Hanson, M.L., 2023. Recommendations for improving the reporting and communication of aquatic toxicity studies for oil spill planning, response, and environmental assessment. *Aquatic Toxicology* 255, 106391. <https://doi.org/10.1016/j.aquatox.2022.106391>.

Blum, D.J., and R.E. Speece, 1990. Determining chemical toxicity to aquatic species, *Environ. Sci. Technol.* 24: 284-293.

Boehm, P.D., K.J. Murray, and L.L. Cook. 2016. Distribution and attenuation of polycyclic aromatic hydrocarbons in Gulf of Mexico seawater from the Deepwater Horizon oil accident. *Environ Sci Technol* 50:584–592. <http://dx.doi.org/10.1021/acs.est.5b03616>

Bonn Agreement. 2009. Bonn Agreement Aerial Operations Handbook, 2009. London, UK. Available: http://www.bonnagreement.org/site/assets/files/1081/ba-aoh_revision_2_April_2012-1.pdf, Accessed 4 June 2015.

Bonn Agreement, 2011. Bonn Agreement Oil Appearance Code Photo Atlas. Available: http://www.bonnagreement.org/site/assets/files/1081/photo_atlas_version_20112306-1.pdf. Accessed: April 2017.

Bridges, K.N., M.O. Krasnec, J.T. Magnuson, J.M. Morris, M.L. Gielazyn, J.R.Chavez, and A.P. Roberts. 2018. Influence of Variable Ultraviolet Radiation and Oil Exposure Duration on Survival of Red Drum (*Sciaenops ocellatus*) larvae, *Environmental Toxicology and Chemistry* 37(9): 2372–2379.

Carls, M.G., Holland, L., Larsen, M., Collier, T.K., Scholz, N.L., Incardona, J.P., 2008. Fish embryos are damaged by dissolved PAHs, not oil particles. *Aquat. Toxicol.* 88, 121–127.

Dettman, H., T.L. Wade, D.P. French-McCay, A.C. Bejarano, B.P. Hollebhone, L.-G. Faksness, F.S. Mirnaghi, Z. Yang, J.R. Loughery, T. Pretorius, B. de Jourdan. 2023. Recommendations for the advancement of oil-in-water media and source oil characterization in aquatic toxicity studies. *Aquatic Toxicology* 261, 106582. <https://doi.org/10.1016/j.aquatox.2023.106582>.

DiToro, D.M., J.A. McGrath and D.J. Hansen. 2000. Technical basis for narcotic chemicals and polycyclic aromatic hydrocarbon criteria. I. Water and tissue. *Environmental Toxicology and Chemistry* 19(8): 1951-1970.

DiToro, D.M. and J.A. McGrath. 2000. Technical basis for narcotic chemicals and polycyclic aromatic hydrocarbon criteria. II. Mixtures and sediments. *Environmental Toxicology and Chemistry* 19(8): 1971-1982.

Driskell, W.B., Payne, J.R., 2018. Macondo oil in northern Gulf of Mexico waters – Part 2: Dispersant-accelerated PAH dissolution in the Deepwater Horizon plume. *Marine Pollution Bulletin* 129: 412-419. <https://doi.org/10.1016/j.marpolbul.2018.02.057>

Fodrie, F.J., Able, K.W., Galvez, F., Heck, K.L., Jensen, O.P., Lopez-Duarte, P.C., Martin, C.W., Turner, R.E., Whitehead, A., 2014. Integrating organismal and population responses of estuarine fishes in Macondo spill research. *Bioscience* 64:778–788. <http://dx.doi.org/10.1093/biosci/biu123>.

Forth, H.P., C.L. Mitchelmore, J.M. Morris, and J. Lipton. 2017. Characterization of oil and water accommodated fractions used to conduct aquatic toxicity testing in support of the Deepwater Horizon oil spill natural resource damage assessment. *Environ Toxicol Chem* 36:1450–1459.

French-McCay, D.P. 2002. Development and application of an Oil Toxicity and Exposure Model, OilToxEx. *Environ. Toxicol. Chem.* 21, 2080-2094.

French-McCay, D.P. 2003. Development and application of damage assessment modeling: example assessment for the *North Cape* Oil Spill. *Marine Poll Bull.* 47(9–12):341–359. DOI:10.1016/s0025-326X(03)00208-X

French-McCay, D.P. 2004. Oil spill impact modeling: development and validation. *Environmental Toxicology and Chemistry* 23(10): 2441–2456. DOI: 10.1897/03-382

French-McCay, D.P, N. Whittier, D. Aurand, C. Dalton, J. J. Rowe, S. Sankaranarayanan, 2005. Modeling fates and impacts of hypothetical oil spills in Delaware, Florida, Texas, California, and Alaska waters, varying response options including use of dispersants. Proceedings, 2005 International Oil Spill Conference, Paper 399, Miami, Florida, American Petroleum Institute, Washington, DC.

French-McCay, D.P. 2009. State-of-the-art and research needs for oil spill impact assessment modeling. In Proceedings of the 32nd AMOP Technical Seminar on Environmental Contamination and Response, Emergencies Science Division, Environment Canada, Ottawa, ON, Canada, pp. 601-653.

French McCay, D., D. Reich, J. Michel, D. Etkin, L. Symons, D. Helton and J. Wagner, 2012. Oil Spill Consequence Analyses of Potentially-Polluting Shipwrecks. In Proceedings of the 35th AMOP Technical Seminar on Environmental Contamination and Response, Emergencies Science Division, Environment Canada, Ottawa, ON, Canada.

French McCay, D.P, A. Morandi, M.C. McManus, M. Schroeder Gearon, K. Jayko, and J.J. Rowe. 2015a. Technical Reports for Deepwater Horizon Water Column Injury Assessment –

WC_TR.09: Vertical Distribution Analysis of Plankton. DWH NRDA Water Column Technical Working Group Report. Prepared for National Oceanic and Atmospheric Administration by RPS ASA, South Kingstown, RI, USA. DWH NRDA Water Column Technical Working Group Report. Prepared for National Oceanic and Atmospheric Administration by RPS ASA, South Kingstown, RI, USA. Administrative Record no. DWH-AR0195958.pdf, DWH-AR0171921.xlsx, DWH-AR0171922.xlsx [<https://www.doi.gov/deepwaterhorizon/adminrecord>]

French McCay, D.P, M.C. McManus, R. Balouskus, J.J. Rowe, M. Schroeder, A. Morandi, E. Bohaboy, and E. Graham. 2015b. Technical Reports for Deepwater Horizon Water Column Injury Assessment: WC_TR.10: Evaluation of Baseline Densities for Calculating Direct Injuries of Aquatic Biota During the Deepwater Horizon Oil Spill. DWH NRDA Water Column Technical Working Group Report. Prepared for National Oceanic and Atmospheric Administration by RPS ASA, South Kingstown, RI, USA. Administrative Record no. DWH-AR0285021.pdf, DWH-AR0285141.xlsx, DWH-AR02851412.xlsx [<https://www.doi.gov/deepwaterhorizon/adminrecord>]

French McCay, D., J. Rowe, R. Balouskus, A. Morandi, R.C. McManus. 2015c. Technical Reports for Deepwater Horizon Water Column Injury Assessment – WC_TR.28: Injury quantification for planktonic fish and invertebrates in estuarine, shelf and offshore waters. DWH NRDA Water Column Technical Working Group Report. Prepared for National Oceanic and Atmospheric Administration by RPS ASA, South Kingstown, RI, USA. Administrative Record no. DWH-AR0172019.pdf, DWH-AR0172219.xlsx- DWH-AR0172227.xlsx [<https://www.doi.gov/deepwaterhorizon/adminrecord>]

French-McCay, D., 2016. Potential Effects Thresholds for Oil Spill Risk Assessments. p. 285-303 In: Proceedings of the 39th AMOP Technical Seminar on Environmental Contamination and Response, Emergencies Science Division, Environment Canada, Ottawa, ON, Canada.

French-McCay, D., D. Crowley, J. Rowe, M. Bock, H. Robinson, R. Wenning, A. H. Walker, J. Joeckel, and T. Parkerton. 2018. Comparative Risk Assessment of Spill Response Options for a Deepwater Oil Well Blowout: Part I. Oil Spill Modeling. *Mar. Pollut. Bull.* <https://doi.org/10.1016/j.marpolbul.2018.05.042>.

French-McCay, D.P., K. Jayko, Z. Li, M. Spaulding, D. Crowley, D. Mendelsohn, M. Horn, T. Isaji, Y. H. Kim, J. Fontenault, and J. J. Rowe. 2021a. Oil fate and mass balance for the Deepwater Horizon oil spill. *Marine Pollution Bulletin* 171: 112681. <https://doi.org/10.1016/j.marpolbul.2021.112681>

French-McCay, D.P., H. J. Robinson, M. L. Spaulding, Z. Li, M. Horn, M. D. Gloekler, Y. H. Kim, D. Crowley, and D. Mendelsohn. 2021b. Validation of oil fate and mass balance for the Deepwater Horizon oil spill: Evaluation of water column partitioning. *Marine Pollution Bulletin* 173:113064. <https://doi.org/10.1016/j.marpolbul.2021.113064>

French-McCay, D.P., T. F. Parkerton, and B. de Jourdan. 2023. Bridging the lab to field divide: advancing oil spill biological effects models requires revisiting aquatic toxicity testing. *Aquatic Toxicology* 256, 106389. <https://doi.org/10.1016/j.aquatox.2022.106389>.

- French-McCay, D.P., H.J. Robinson, J.E. Adams, M.A. Frediani, M.J. Murphy, C. Morse, M. Gloekler, and T.F. Parkerton. 2024. Parsing the toxicity paradox: Composition and duration of exposure alter predicted oil spill effects by orders of magnitude. *Marine Pollution Bulletin* 202: 116285. <https://doi.org/10.1016/j.marpolbul.2024.116285>
- Fox, D.R., R.A. van Dam, R. Fisher, G.E. Batley, A.R. Tillmanns, J. Thorley, C.J. Schwarz, D.J. Spry, K. McTavish. 2021. Recent developments in Species Sensitivity Distribution modeling. *Environmental Toxicology and Chemistry* 40: 293-308. <https://doi.org/10.1002/etc.4925>
- Gobas, F.A.P.C., P. Mayer, T.F. Parkerton, R.M. Burgess, D. van de Meent, and T. Gouin. 2018. A chemical activity approach to exposure and risk assessment of chemicals. *Environmental Toxicology and Chemistry* 37(5):1235-1251. <https://doi.org/10.1002/etc.4091>
- Hamoda MF, Hamam SE & Shaban HI 1989. Volatisation of crude oil from saline water. *Oil and Chemical Pollution* 5, 311–331.
- Hodson, P.V., D.G. Dixon, and K.L.E. Kaiser, 1988. Estimating the Acute Toxicity of Waterborne Chemicals in Trout from Measurements of Median Lethal Dose and the Octanol-Water Partition Coefficient, *Journal of Environmental Toxicology and Chemistry* 7:443-454.
- Hodson, P.V., J. Adams, and R.S. Brown. 2019. Oil toxicity test methods must be improved. *Environmental Toxicology and Chemistry* 38(2):302-311. <https://doi.org/10.1002/etc.4303>
- Hook, S.E. 2020. Beyond thresholds: A holistic approach to impact assessment is needed to enable accurate predictions of environmental risk from oil spills. *Integrated Environmental Assessment Management* 16(6):813-830. <https://doi.org/10.1002/ieam.4321>
- Kraly, J., R.G. Pond, A.H. Walker, J. Caplis, D.V. Aurand, G.M. Coelho, B. Martin, M. Sowby, 2001. Ecological Risk Assessment Principles Applied to Oil Spill Response Planning. In: *Proceedings of the 2001 International Oil Spill Conference*, American Petroleum Institute, Washington, DC, 2001:177-184.
- Lee, J-H., P.F. Landrum, and C-H Koh. 2002. Toxicokinetics and time-dependent PAH toxicity in the amphipod *Hyalella azteca*. *Environmental Science & Technology* 36: 3124-3130. <https://doi.org/10.1021/es011201>
- Lee, K., G.M. Coelho, J.R. Loughery, and B. de Jourdan. 2023. Advances to the CROSERF protocol to improve oil spill response decision making. *Aquatic Toxicology* 260, 106580. <https://doi.org/10.1016/j.aquatox.2023.106580>
- Loughery, J.R., G.M. Coelho, K. Lee, and B. de Jourdan, 2023. Setting the stage to advance oil toxicity testing: Overview of knowledge gaps, and recommendations, *Aquatic Toxicology* 261, 106581, <https://doi.org/10.1016/j.aquatox.2023.106581>.

Lunel T. 1994. Dispersion of a large experimental slick by aerial application of dispersant. Arctic and marine oil spill program technical seminar, pp 951–951.

Mackay, D., H. Puig and L.S. McCarty, 1992. An equation describing the time course and variability in uptake and toxicity of narcotic chemicals to fish. *Environ. Toxicol. Chemistry* 11: 941-951.

Mackay, D., A.K.D. Celsie, J.M. Parnis, L.S. McCarty, J.A. Arnot, and D.E. Powell. 2017. The chemical exposure toxicity space (CETS) model: Displaying exposure time, aqueous and organic concentration, activity, and onset of toxicity. *Environmental Toxicology and Chemistry* 36 (5):1389-1396. doi: 10.1002/etc.3668.

Malins, D.C. and H.O. Hodgins, 1981. Petroleum and marine fishes: a review of uptake, disposition, and effects. *Environ. Sci. Technol.* 15(11): 1273-1280.

Mancini, J.L., 1983. A method for calculating effects in aquatic organisms of time varying concentrations. *Water Res.* 17:1355-1362.

McAuliffe C, Johnson J, Greene S, Canevari G, Searl D. 1980 Dispersion and weathering of chemically treated crude oils on the ocean. *Environ Sci Technol* 14:1509–1518.

McAuliffe C, Steelman R, Leek W, Fitzgerald D, Ray J. 1981. 1979 Southern California dispersant treated research oil spills. Proceedings, 1981 Oil Spill Conference, American Petroleum Institute, Atlanta, GA, USA, March 2–5, 1981, pp 269–282.

McAuliffe, C.D., 1987. Organism exposure to volatile/soluble hydrocarbons from crude oil spills – a field and laboratory comparison. Proceedings of the 1987 Oil Spill Conference, API, p. 275-288.

McCarty, L.S., 1986. The Relationship Between Aquatic Toxicity QSARs and Bioconcentration for Some Organic Chemicals, *Journal of Environmental Toxicology Chemistry*, 5:1071-1080, 1986.

McCarty, L.S., and D. Mackay, 1993. Enhancing Ecotoxicological Modeling and Assessment, *Journal of Environmental Science and Technology*, Vol. 27, No. 9, p. 1719-1728.

McCarty, L.S., D. Mackay, A. D. Smith, G.W. Ozburn, and D.G. Dixon, 1992a. Residue-based interpretation of toxicity and bioconcentration QSARs from aquatic bioassays: neutral narcotic organics. *Environmental Toxicology and Chemistry* 11: 917-930.

McCarty, L.S., G.W. Ozburn, A. D. Smith, and D.G. Dixon, 1992b. Toxicokinetic modeling of mixtures of organic chemicals. *Environmental Toxicology and Chemistry* 11: 1037-1047.

McGrath J, Parkerton T, Hellweger F, Di Toro D. 2005. Validation of the narcosis target lipid model for petroleum products: Gasoline as a case study. *Environ Toxicol Chem* 24: 2382-2394.

- McGrath J.A., and D.M. Di Toro, 2009. Validation of the target lipid model for toxicity assessment of residual petroleum constituents: Monocyclic and polycyclic aromatic hydrocarbons. *Environ Toxicol Chem* 28: 1130–1148.
- McGrath J.A., C. Fanelli, D.M. Di Toro, T.F. Parkerton, A.D. Redman, M.L. Paumen, M. Comber, C.V. Eadsforth, and K. den Haan 2018. Re-evaluation of Target Lipid Model–Derived HC5 Predictions for Hydrocarbons. *Environ Toxicol Chem* 37:1579-1593.
- National Academies of Sciences, Engineering, and Medicine (NASEM). 2020. *The Use of Dispersants in Marine Oil Spill Response*. Washington, DC: The National Academies Press, 340p. <https://doi.org/10.17226/25161>.
- National Offshore Petroleum Safety and Environmental Management Authority (NOPSEMA), 2019. *Oil Spill Modelling*. NOPSEMA Environmental Bulletin, April 2019, 7p. <https://www.nopsema.gov.au/sites/default/files/documents/2021-04/A652993.pdf>
- National Research Council (NRC). 2003. *Ocean Studies, Oil in Sea III. Inputs, Fates and Effects*. National Research Council, The National Academies Press, Washington, USA, 446p.
- National Research Council (NRC). 2005. *Understanding Oil Spill Dispersants: Efficacy and Effects*, National Academy Press, Washington, D.C., USA, 277p.
- Neff, J.M., and J.W. Anderson, 1981. *Response of marine animals to petroleum and specific petroleum hydrocarbons*, Applied Science Publishers, Halsted Press, John Wiley & Sons, NY, 177p.
- Negri, A., D. Brinkman, F. Flores, J. van Dam, H. Luter, M. Thomas, R. Fisher, L. Stapp, P. Kurtenbach, A. Severati, T. Parkerton, R. Jones. 2021. Derivation of toxicity thresholds for gas condensate oils protective of tropical species using experimental and modelling approaches. *Marine Pollution Bulletin* 172(3625–3633):112899. <https://doi.org/10.1016/j.marpolbul.2021.112899>
- Nirmalakhandan, N. and R.E. Speece, 1988. Structure-Activity Relationships, Quantitative Techniques for Predicting the Behavior of Chemicals in the Ecosystem, *Journal of Environmental Science Technology* 22(6): 606-615.
- National Oceanic and Atmospheric Administration (NOAA), *Risk Assessment for Potentially Polluting Wrecks in U.S. Waters*. National Oceanic and Atmospheric Administration, Silver Spring, MD. 127 pp + appendices, 2013.
- Nordborg, F.M, F. Flores, D.L. Brinkman, S. Agustí, and A.P. Negri, 2018. Phototoxic effects of two common marine fuels on the settlement success of the coral *Acropora tenuis*. *Nature, Scientific Reports* 8:8635. DOI:10.1038/s41598-018-26972-7

Nordtug, T., A. J. Olsen, D. Altin, I. Overrein, W. Storøy, B.H. Hansen, and F. De Laender, 2011. Oil droplets do not affect assimilation and survival probability of first feeding larvae of North-East Arctic cod. *Science of the Total Environment* 412-413:148–153

Parkerton, T.F., D.P. French-McCay, B. de Jourdan, K. Lee, and G.M. Coelho. 2023a. Adopting a toxic unit model paradigm in design, analysis and interpretation of oil toxicity testing. *Aquatic Toxicology* 255, 106392, <https://doi.org/10.1016/j.aquatox.2022.106392>.

Parkerton, T.F., M. Boufadel, T. Nordtug, C.L. Mitchelmore, K.A. Colvin, D. Wetzel, M.G. Barron, G.E. Bragin, B. de Jourdan, and J. Loughery. 2023b. Recommendations for advancing media preparation methods used to assess aquatic hazards of oils and spill response agents. *Aquatic Toxicology* 259, 106518. <https://doi.org/10.1016/j.aquatox.2023.106518>.

Payne, J.R., B.E. Kirstein, G.D. McNabb, Jr., J.L. Lambach, R. Redding R.E. Jordan, W. Hom, C. deOliveria, G.S. Smith, D.M. Baxter, and R. Gaegel, 1984. Multivariate analysis of petroleum weathering in the marine environment – sub Arctic, Environmental Assessment of the Alaskan Continental Shelf, OCSEAP, Final Report of Principal Investigators, Vol. 21 and 22, Feb. 1984, 690p. <https://marinecadastre.gov/espis/#/search/study/25918>

Payne, J.R., J.R. Clayton Jr., G. Daniel McNabb Jr., B.E. Kirstein, 1991. Exxon Valdez Oil Weathering Fate and Behavior: Model Predictions and Field Observations. *International Oil Spill Conference Proceedings* 1991:1, 641-654. <https://doi.org/10.7901/2169-3358-1991-1-641>

Payne, J.R. and W.B. Driskell. 2017. Water-column measurements and observations from the Deepwater Horizon oil spill natural resource damage assessment. *International Oil Spill Conference Proceedings* 2017(1): 3071-3090. <https://doi.org/10.7901/2169-3358-2017.1.3071>

Payne, J.R and W.B. Driskell, 2018. Macondo oil in northern Gulf of Mexico waters – Part 1: Assessments and forensic methods for Deepwater Horizon offshore water samples. *Marine Pollution Bulletin* 129:399–411. <https://doi.org/10.1016/j.marpolbul.2018.02.055>

Philibert, D., D. Lyons, C. Philibert, and K.B. Tierney. 2019. Field-collected crude oil, weathered oil and dispersants differentially affect the early life stages of freshwater and saltwater fishes. *Science of the Total Environment* 647: 1148–1157. <https://doi.org/10.1016/j.scitotenv.2018.08.052>

Philibert, D., T. Parkerton, S. Martinson, and B. de Jourdan. 2021. Assessing the toxicity of individual aromatic compounds and mixtures to American Lobster (*Homarus americanus*) larvae using a passive dosing system. *Environmental Toxicology and Chemistry* 40:1379-1388. doi: 10.1002/etc.4988.

Posthuma, L., G.W. Suter II, and T.P. Traas, 2002. *Species Sensitivity Distributions in Ecotoxicology*. Lewis, Boca Raton, FL, 616p, A CRC Press Company, ISBN 9780367396480.

Redman A, McGrath J, Febbo E, Parkerton T, Letinski D, Connelly M, Winkelmann D, Di Toro D. 2007. Application of the target lipid model for deriving predicted no-effect concentrations for wastewater organisms. *Environ Toxicol Chem* 26:2317–2331

Redman A., Parkerton T., McGrath J., and Di Toro D. 2012. PETROTOX: An Aquatic Toxicity Model For Petroleum Substances. *Environmental Toxicology and Chemistry*. 31(11): 2498-2506.

Redman A.D., 2015. Role of entrained droplet oil on the bioavailability of petroleum substances in aqueous exposures. *Marine Pollution Bulletin* 97:42–348.

Redman A., and T. Parkerton, 2015. Guidance for improving comparability and relevance of oil toxicity tests. *Marine Pollution Bulletin* 98:156–170.

Redman, A.D., J.D. Butler, D.J. Letinski, and T.F. Parkerton. 2017a. Investigating the role of dissolved and droplet oil on aquatic toxicity using dispersed and passive dosing systems. *Environmental Toxicology and Chemistry* 36: 1020–1028. DOI:10.1002/etc.3624.

Redman, A. D., T.F. Parkerton, M. Leon Paumen, J.D. Butler, D.J. Letinski, and K. den Haan. 2017b. A re-evaluation of PETROTOX for predicting acute and chronic toxicity of petroleum substances. *Environmental Toxicology and Chemistry* 36(8): 2245–2252. <https://doi.org/10.1002/etc.3744>

Singer, M.M., D. Aurand, G. E. Bragins, J. R. Clark, G. M. Coelho, M .L. Sowby and R. S. Tjeerdema, 2000. Standardization of the preparation and quantitation of water-accommodated fractions of petroleum for toxicity testing. *Marine Pollution Bulletin* 40 (11): 1007-1016.

Smit, MG, Bechmann, RK, Hendriks, AJ, Skadsheim, A, Larsen, BK, Baussant, T, Shaw, B and Sanni, S, 2009. Relating biomarkers to whole-organism effects using species sensitivity distributions: A pilot study for marine species exposed to oil, *Environmental Toxicology and Chemistry* 28(5):1104-1109.

Sprague, J.B., 1969. Measurement of pollutant toxicity to fish. I. Bioassay Methods for Acute Toxicity. *Water Research* 3: 793 821.

Stephan CE, Mount DI, Hansen DJ, Gentile HJ, Chapman GA & Brungs WA 1985. Guidelines for deriving numerical national water quality criteria for the protection of aquatic organisms and their uses. US Environmental Protection Agency, Washington DC. PB85-227049, 9811.

Stout, S.A., J.R Payne, S.D. Emsbo-Mattingly, and G. Baker. 2016. Weathering of field-collected floating and stranded Macondo oils during and shortly after the Deepwater Horizon oil spill. *Marine Pollution Bulletin* 105(1):7-22. <http://dx.doi.org/10.1016/j.marpolbul.2016.02.044>.

Stubblefield, W., M.G. Barron, G. Bragin, M. DeLorenzo, B.de Jourdan, B. Echols, D.P. French-McCay, P. Jackman, J.R. Loughery, T.F. Parkerton, D.A. Renegar, and J.L. Rodriguez-Gil. 2023. Improving the design and conduct of aquatic toxicity studies with oils based on 20 years of

CROSERF experience. *Aquatic Toxicology* 261, 106579.
<https://doi.org/10.1016/j.aquatox.2023.106579>.

Swartz, R.C., D.W. Schults, R.J. Ozretich, J.O. Lamberson, F.A. Cole, T.H. DeWitt, M.S. Redmond, and S.P. Ferraro, 1995. Σ PAH: A Model to Predict the Toxicity of Polynuclear Aromatic Hydrocarbon Mixtures in Field-Collected Sediments, *Journal of Environmental Toxicology and Chemistry* 14(11): 1977-1987.

Tsvetnenko Y 1998. Derivation of Australian tropical marine water quality criteria for protection of aquatic life from adverse effects of petroleum hydrocarbons. *Environmental Toxicology and Water Quality* 13, 273–284.

USEPA 1994d. Whole effluent toxicity (WET) control policy. US Environmental Protection Agency Office of Water, Washington DC. EPA/833-B-94-002.

Veith. G.D., D.J. Call, and L.T. Brooke, 1983. Structure-toxicity relationships for the fathead minnow. *Can. J. Fish. Aquat. Sci.* 40: 743-748.

Verhaar, H.J.K., D.J. VanLeeuwen, and J.L.M. Hermens, 1992. Classifying environmental pollutants, 1. Structure-activity relationships for prediction of aquatic toxicity, *Chemosphere* 25: 471-491.

Verhaar, H.J.M., W. deWolf, S. Dyer, K. Legierse, W. Seinen, and J.L.M. Hemens, 1999. An LC50 vs. time model for the aquatic toxicity of reactive and receptor-mediated compounds: consequences for bioconcentration kinetics and risk assessment. *Environmental Sci. Technol.* 33:758-763.

Wade, T. L., Sericano, J. L., Sweet, S. T., Knap, A. H., & Guinasso Jr, N. L. (2016). Spatial and temporal distribution of water column total polycyclic aromatic hydrocarbons (PAH) and total petroleum hydrocarbons (TPH) from the Deepwater Horizon (Macondo) incident. *Marine Pollution Bulletin* 103(1-2): 286–293. <http://dx.doi.org/10.1016/j.marpolbul.2015.12.002>

Yang, C., P. Lambert, G. Zhang, Z. Yang, M. Landriault, B. Hollebhone, B. Fieldhouse, F. Mirnaghi, C. E. Brown, 2017. Characterization of chemical fingerprints of unconventional Bakken crude oil. *Environmental Pollution* 230: 609-620.